



SIENA RESEARCH INSTITUTE

SIENA COLLEGE, LOUDONVILLE, NY

www.siena.edu/sri

For Immediate Release:
Contact:

Wednesday February 20, 2008
Steven Greenberg at 518-469-9858

Siena New York Poll:

More Voters View Spitzer Unfavorably than Favorably

Plurality of Voters Prefer Tax Increase Rather than Cuts in Education or Health Care Spending to Close Potential State Budget Gap

Only One in Seven Voters Thinks New York is Better Since Spitzer Became Governor; More than Half Think Things Are About the Same

Loudonville, NY. Governor Eliot Spitzer's favorability rating fell this month with a plurality of voters having an unfavorable view of him, according to a new Siena (College) Research Institute poll of registered voters released today. The Siena New York poll shows that voters continue to give the Governor a two-to-one negative job performance and twice as many voters say they would "prefer someone else" rather than re-elect Spitzer. When given three options for closing a potential state budget gap, more voters – nearly one-third – chose increasing taxes over cutting either education or health care spending.

"The way voters view Governor Spitzer is the same in February as it was last November. After a modest improvement last month, when more voters had a favorable view of the Governor, this month more voters view him unfavorably," said Steven Greenberg, spokesman for the Siena New York Poll. "The falloff in his favorability rating was largely among Democrats, African American and Latino voters. The only demographic group with a majority having a favorable view of Spitzer is Jewish voters, at 53 percent."

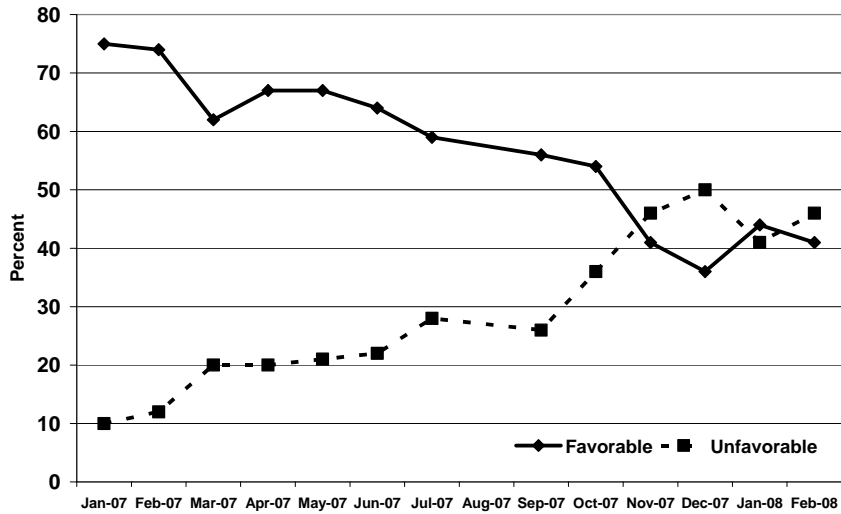
Spitzer's favorable/unfavorable rating is 41 percent favorable, 46 percent unfavorable, down from 44-41 percent in January. Thirty-three percent of voters give him a positive (excellent or good) job performance rating, compared to 65 percent who rate his job performance as negative (fair or poor). It is virtually unchanged from January's 32-64 percent. Currently, 25 percent of voters are prepared to re-elect Spitzer (down from 27 percent in January), while 50 percent (up from 46 percent) would prefer "someone else."

"Voters do not think that the things in New York State have gotten better since Eliot Spitzer became Governor last year," Greenberg said. "More than one in five voters – 22 percent – say things have gotten worse, while only 15 percent say things have gotten better. The majority, 58 percent, say things have stayed pretty much the same. For New Yorkers, the slogan 'everything changes on Day 1' is a long forgotten memory."

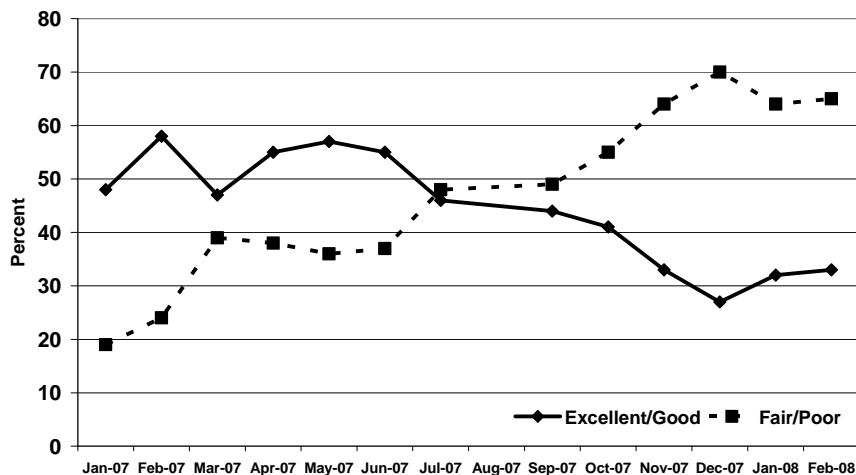
When given only three options to close a potential state budget gap – reduce the proposed increase in education spending, make further reductions in health care spending, or increase taxes – voters were divided. Thirty-two percent said to increase taxes, 20 percent said reduce education spending increases, 18 percent said make further cuts in health care spending, and 29 percent were undecided.

“Voters tell the Governor and Legislature they don’t particularly like any of the obvious choices for closing a potential state budget gap,” Greenberg said. “While a strong plurality of Democrats, African Americans and New York City voters want a budget gap closed by increasing taxes as opposed to reducing education or health care spending, voters from other regions and other parties are much more divided.”

Gov. Spitzer Favorable/Unfavorable Ratings



Gov. Spitzer Job Performance Ratings



###

This SRI survey was conducted February 11-14, 2008 by telephone calls to 633 registered New York State voters. It has a margin of error of ± 3.9 percentage points. For more information, please call Steven Greenberg at 518-469-9858. Survey cross-tabulations and frequencies can be found at: www.siena.edu/sri/snyfeb08ny.



SIENA RESEARCH INSTITUTE

SIENA COLLEGE, LOUDONVILLE, NY

www.siena.edu/sri

Siena New York Poll Trends – February 2008

Do you have a favorable or unfavorable opinion about Eliot Spitzer?

DATE	FAVORABLE	UNFAVORABLE	DON'T KNOW/NO OPINION
February 2008	41	46	13
January 2008	44	41	15
December 2007	36	51	13
November 2007	41	46	13
October 2007	54	36	10
September 2007	56	26	18
July 2007	59	28	14
June 2007	64	22	15
May 2007	67	21	12
April 2007	67	20	13
March 2007	62	20	18
February 2007	74	12	14
January 2007	75	10	16
November 15, 2006	75	14	12
November 3, 2006	74	17	10
October 2006	69	20	12
September 2006	74	16	10
August 2006	71	15	15
June 2006	68	16	16
May 2006	63	19	19
March 2006	62	18	20
January 2006	59	19	23
November 2005	65	15	20
October 2005	61	19	20
August 2005	60	14	26
July 2005	62	15	22
June 2005	59	15	25
May 2005	58	17	25
April 2005	53	18	29
March 2005	50	18	32
February 2005	48	17	34

I know it's a long way off, but if Eliot Spitzer runs for Governor in 2010, would you vote to re-elect him or would you prefer someone else?

DATE	RE-ELECT	SOMEONE ELSE	DON'T KNOW/NO OPINION
February 2008	25	50	24
January 2008	27	46	27
December 2007	23	56	21
November 2007	25	49	26

Siena New York Poll Trends – February 2008

Page 2

How would you rate the job that Eliot Spitzer is doing as Governor – excellent, good, fair, or poor?

DATE	EXCELLENT	GOOD	FAIR	POOR	DON'T KNOW/NO OPINION
February 2008	4	29	45	20	3
January 2008	3	29	44	20	5
December 2007	3	24	41	29	3
November 2007	4	29	37	27	4
October 2007	4	37	38	17	4
September 2007	5	39	38	11	8
July 2007	7	39	34	14	6
June 2007	9	46	30	7	8
May 2007	11	46	27	9	7
April 2007	10	45	31	7	7
March 2007	8	39	31	8	13
February 2007	15	43	21	3	20
January 2007	11	37	15	4	33

Is New York State on the right track, or is it headed in the wrong direction?

DATE	RIGHT TRACK	WRONG DIRECTION	DON'T KNOW/NO OPINION
February 2008	33	43	24
January 2008	39	38	23
December 2007	35	45	21
November 2007	32	45	23
October 2007	42	36	22
September 2007	44	30	26
July 2007	37	38	25
June 2007	45	28	27
May 2007	46	29	25
April 2007	47	29	24
March 2007	37	37	26
February 2007	49	26	25
January 2007	45	26	30
November 15, 2006	52	30	18
November 3, 2006	36	43	21
October 2006	29	47	23
September 2006	33	39	28
August 2006	29	47	25
June 2006	29	45	26
May 2006	27	52	21
March 2006	35	39	26
January 2006	34	43	24
November 2005	38	41	22
October 2005	34	42	24
August 2005	36	44	20
July 2005	33	41	26
June 2005	30	44	26
May 2005	29	46	25
April 2005	29	44	27
March 2005	26	47	27
February 2005	32	44	24

Siena Research Institute - 02/11/08 - 02/14/08 633 completes +/- 3.9%

1. Is New York State on the right track, or is it headed in the wrong direction?

	Party				GENDER		Region			Ethnic			AGE			Religion			
	Total	Dem	Rep	Ind./ Other	M	F	NYC	NYC Suburbs	Upstate	White	Afr.Am./ Black	Latino	18-34	35-54	55+	Cath.	Jewish	Prot.	Other
right track	33	40	23	29	30	35	40	37	22	32	29	47	36	33	32	33	41	27	32
wrong direction	41	34	53	47	48	35	33	32	56	46	31	25	34	44	41	42	36	44	40
don't know/no opinion	26	27	24	24	22	30	27	30	22	22	40	28	30	23	28	24	23	30	28

I'm going to read the names of several people in public life and I'd like for you to tell me whether you have a favorable opinion or an unfavorable opinion of each of the people I name.
[Names asked in rotated order]

2. Eliot Spitzer

	Party				GENDER		Region			Ethnic			AGE			Religion			
	Total	Dem	Rep	Ind./ Other	M	F	NYC	NYC Suburbs	Upstate	White	Afr.Am./ Black	Latino	18-34	35-54	55+	Cath.	Jewish	Prot.	Other
favorable	41	49	32	37	42	41	43	42	40	42	40	31	37	41	43	36	53	40	47
unfavorable	46	37	60	49	49	43	42	46	50	47	44	53	47	45	47	51	35	45	41
don't know/no opinion	13	14	9	14	9	16	16	12	11	12	16	16	16	14	10	12	12	15	13

6. How would you rate the job that Eliot Spitzer is doing as Governor? Would you rate it excellent, good, fair, or poor?

	Party				GENDER		Region			Ethnic			AGE			Religion			
	Total	Dem	Rep	Ind./ Other	M	F	NYC	NYC Suburbs	Upstate	White	Afr.Am./ Black	Latino	18-34	35-54	55+	Cath.	Jewish	Prot.	Other
excellent	4	5	2	2	3	5	3	4	4	3	3	0	1	4	4	3	3	2	7
good	29	34	23	25	25	32	33	29	25	30	27	22	22	28	32	26	38	30	29
fair	45	43	43	48	43	46	41	44	48	43	45	66	52	46	39	47	32	47	43
poor	20	14	31	20	26	13	18	20	21	22	13	9	21	19	21	22	24	17	16
don't know/no opinion	3	4	2	4	3	4	5	3	2	2	11	3	4	3	5	2	3	5	5

7. I know it's a long way off, but if Eliot Spitzer runs for Governor in 2010, would you vote to re-elect him or would you prefer someone else?

	Party				GENDER		Region			Ethnic			AGE			Religion			
	Total	Dem	Rep	Ind./ Other	M	F	NYC	NYC Suburbs	Upstate	White	Afr.Am./ Black	Latino	18-34	35-54	55+	Cath.	Jewish	Prot.	Other
re-elect Spitzer	25	33	16	20	25	25	23	27	26	27	15	22	22	26	25	24	36	23	25
prefer someone else	50	45	60	52	52	49	51	50	49	50	50	50	56	49	51	57	42	46	46
don't know/no opinion	24	22	24	28	23	26	26	22	24	23	35	28	22	25	24	20	21	31	29

8. Looking back, do you think things in New York State are better, worse, or about the same as they were prior to when Eliot Spitzer became Governor in January 2007?

	Party				GENDER		Region			Ethnic			AGE			Religion			
	Total	Dem	Rep	Ind./ Other	M	F	NYC	NYC Suburbs	Upstate	White	Afr.Am./ Black	Latino	18-34	35-54	55+	Cath.	Jewish	Prot.	Other
better	15	21	8	11	14	15	18	11	14	12	24	25	18	13	18	14	14	10	19
worse	22	19	30	21	24	20	21	24	22	24	19	13	22	21	25	23	23	19	22
same	58	55	56	63	57	59	55	60	59	60	47	59	53	60	54	58	56	65	55
don't know/no opinion	5	5	6	5	4	6	6	5	5	5	10	3	7	6	4	5	8	6	4

9. If current economic conditions and state revenues result in a state budget deficit, which of the following three options should the Legislature and Governor use to close a potential budget gap: (ROTATE CHOICES) reduce the proposed increase in education spending, make further reductions in health care spending, or increase taxes?

	Party				GENDER		Region			Ethnic			AGE			Religion			
	Total	Dem	Rep	Ind./ Other	M	F	NYC	NYC Suburbs	Upstate	White	Afr.Am./ Black	Latino	18-34	35-54	55+	Cath.	Jewish	Prot.	Other
education	20	17	20	26	22	18	18	24	19	21	10	25	27	15	26	23	20	16	18
health care	18	16	23	17	16	20	17	18	19	18	16	13	18	22	12	18	23	16	17
taxes	32	40	24	27	32	32	39	33	26	32	45	31	33	31	35	27	39	37	35
don't know/no opinion	29	26	34	30	29	30	26	25	35	29	29	31	22	31	28	31	18	31	29